

**VATUSA CLEVELAND ARTCC AND VATCAN TORONTO ACC,
VATCAN MONTREAL ACC LETTER OF AGREEMENT**

EFFECTIVE: AUGUST 5, 2022

SUBJECT: INTERFACILITY COORDINATION

1. PURPOSE

This Letter of Agreement defines interfacility procedures, communication procedures, and delegation of airspace between VATUSA Cleveland ARTCC (ZOB) and VATCAN Toronto ACC (ZYZ). This agreement also serves as a supplement to define procedures between VATCAN Montreal ACC (ZUL), ZYZ, and ZOB for the Concordia sector and does NOT replace, amend, or cancel any procedures in place between ZYZ and ZUL.

2. DISCLAIMER

Information contained herein is designed and specifically for use in a virtual air traffic control environment. It is not applicable, nor should it be referenced for live operations.

3. CANCELLATION

VATUSA Cleveland ARTCC and VATCAN Toronto ACC Letter of Agreement dated September 16, 2021 is hereby canceled.

4. RESPONSIBILITIES

Airspace delegation between ZOB and ZYZ must be in accordance with Attachments 1, 2, and 3 of this document. Redelegation procedures for the Concordia airspace are defined in Attachment 4.

5. PROCEDURES (ZOB/ZYZ)

- a. Coordinate and resolve, in a practical manner that provides the smoothest experience to the pilot, all deviations from, and situations not addressed by, this document (e.g., non-standard sectorization, holding, pilots unable to accept LOA routes, aircraft above/below LOA altitudes, etc.).
- b. Coordination and Control procedures must be in accordance with those contained in Attachment 5.
- c. Ensure that all aircraft are at a 1X simulation rate prior to initiating handoff.
- d. Ensure the data block is formatted as follows:
 - i. Data blocks must reflect the aircraft's assigned altitude at the time of handoff.
 - ii. No scratchpad, with the exception of the following operational entries:
 1. Indicated speed restrictions (e.g., "S210", "S270+"). Clients only capable of 4-characters remove the "S" if needed (e.g., "270+")
 2. "M" for Mach speed restrictions (e.g., "M81", "M78+")
 3. "H" for heading assignments (e.g., "H230")
 4. "D" and direction for deviations (e.g., "D15L" for 15 degrees left of track)
- e. ZYZ shall coordinate all KIAG arrivals with BUF TRACON. In order to properly vector

**VATUSA CLEVELAND ARTCC AND VATCAN TORONTO ACC,
VATCAN MONTREAL ACC LETTER OF AGREEMENT**

aircraft for an approach, this coordination shall include any specific altitudes or headings prior to handoff.

- f. When ZYZ is offline: CYYZ arrivals from ZOB may be handed off directly to the appropriate Toronto Arrival controller and CYYZ departures into ZOB may be handed off directly to the appropriate ZOB controller without prior coordination.

6. WINDSOR OPERATIONS (ZOB/ZYZ)

CYQG positions may be opened by controllers on the VATCAN Toronto ACC roster. The following conditions apply for the delegation of the Windsor Class D:

- a. ZOB/D21 delegates the Windsor Class D control zone/airspace to CYQG when CYQG_TWR is online. The following procedures shall apply:
 - i. All IFR departures must receive a radar release from the overlying D21 controller.
 - ii. All VFR departures must have a flight plan that, at a minimum, includes the callsign, aircraft type, and requested VFR altitude.
 - iii. For all arrivals: the overlying D21 controller must provide an inbound call prior to the FAF, or entry into the control zone. Information disseminated shall include callsign, aircraft type, and established approach/runway.
- b. If CYQG_GND is online but CYQG_TWR is offline, the overlying D21 controller may assume control of the active runway(s) and the Windsor Class D control zone/airspace upon appropriate coordination (through ATC chat or private message).
- c. If CYQG_TWR and CYQG_GND are offline, the field shall be treated as uncontrolled by ZOB/D21.

7. ATTACHMENTS

- a. Attachment 1 - General airspace delegation
- b. Attachment 2 - Delegated airspace overlying Buffalo Approach control
- c. Attachment 3 - Delegated airspace along the western control boundary
- d. Attachment 4 - Concordia sector operations
- e. Attachment 5 - Procedures & Preferred Routes and Restrictions Tables
- f. Attachment 6 - Airspace Maps

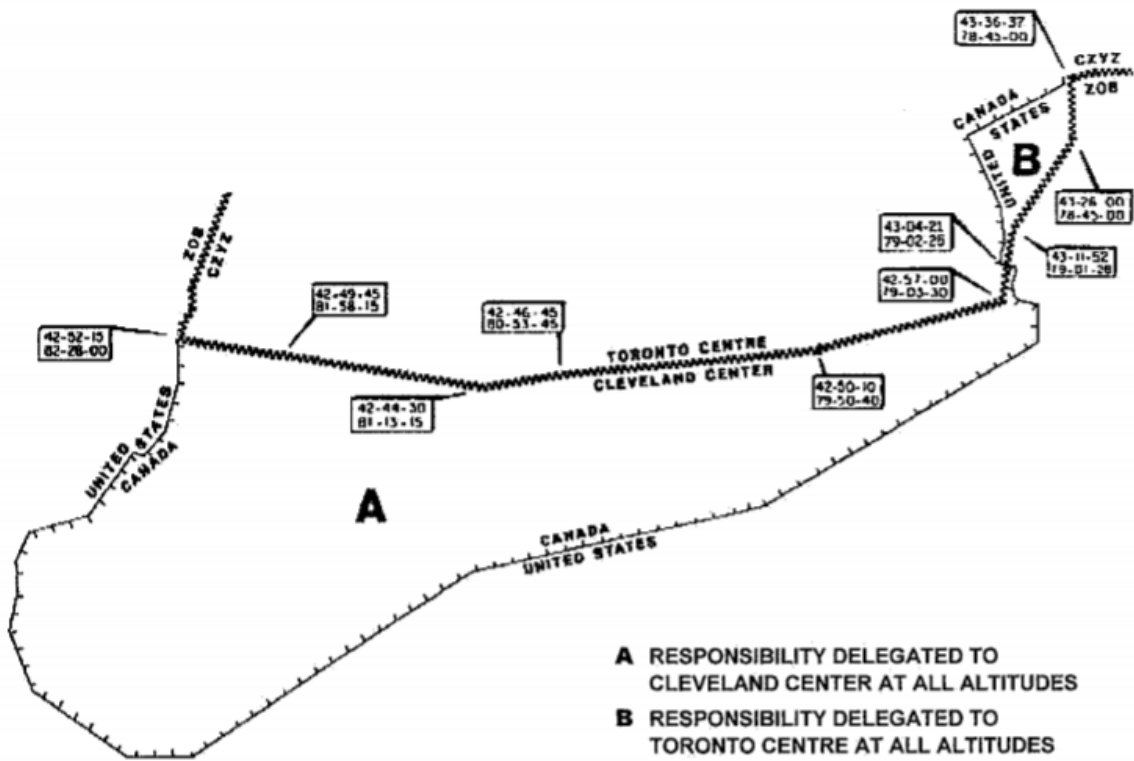
Aidan Deschene
Air Traffic Manager
Cleveland ARTCC

Brendan McCurry
FIR Chief
Toronto ACC

Alexandre Dufrense
FIR Chief
Montreal ACC

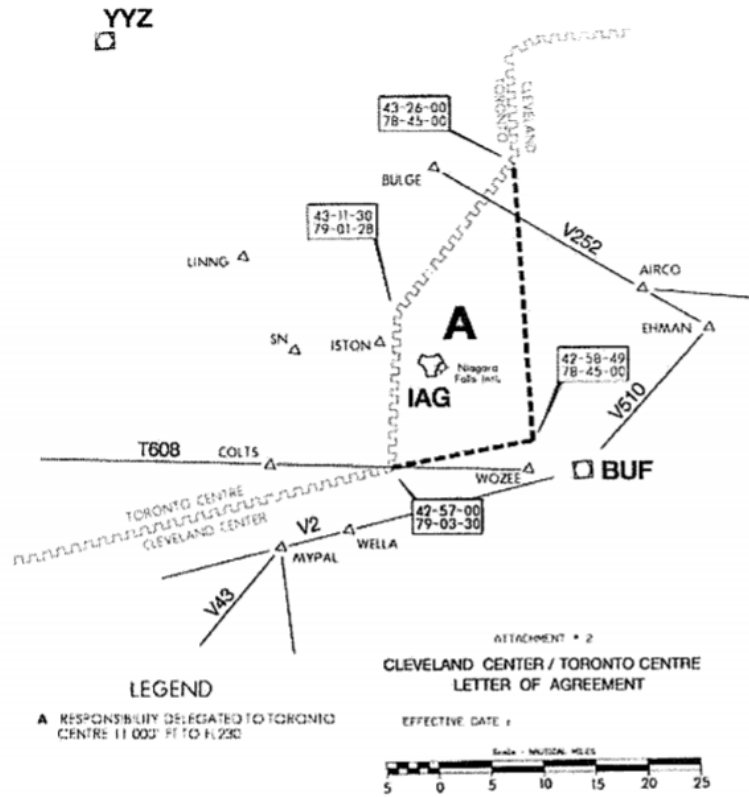
VATUSA CLEVELAND ARTCC AND VATCAN TORONTO ACC,
VATCAN MONTREAL ACC LETTER OF AGREEMENT

ATTACHMENT 1 - GENERAL AIRSPACE DELEGATION



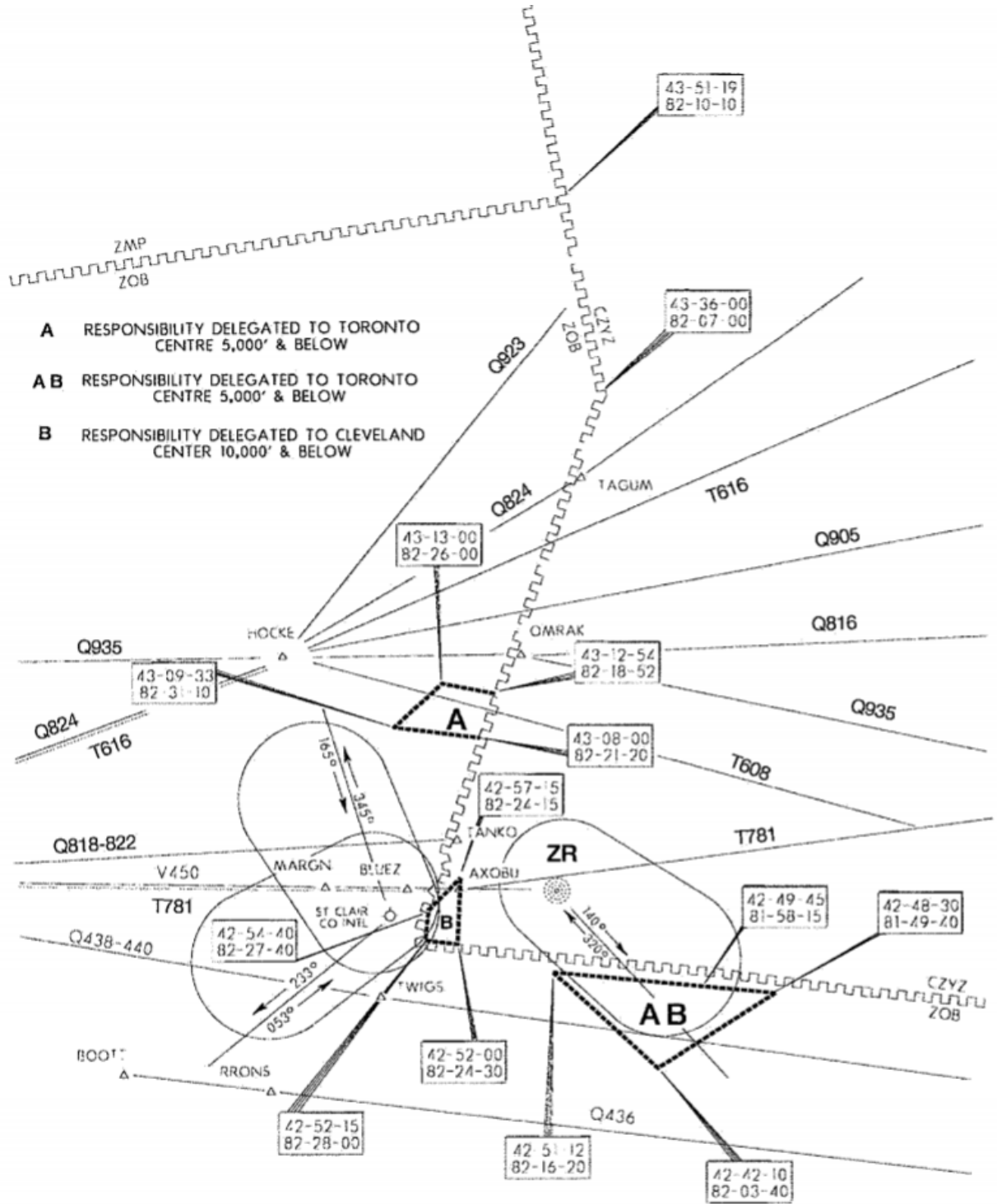
VATUSA CLEVELAND ARTCC AND VATCAN TORONTO ACC,
VATCAN MONTREAL ACC LETTER OF AGREEMENT

ATTACHMENT 2 - DELEGATED AIRSPACE OVERLYING BUFFALO APPROACH CONTROL



VATUSA CLEVELAND ARTCC AND VATCAN TORONTO ACC,
 VATCAN MONTREAL ACC LETTER OF AGREEMENT

ATTACHMENT 3 - DELEGATED AIRSPACE ALONG WESTERN CONTROL BOUNDARY



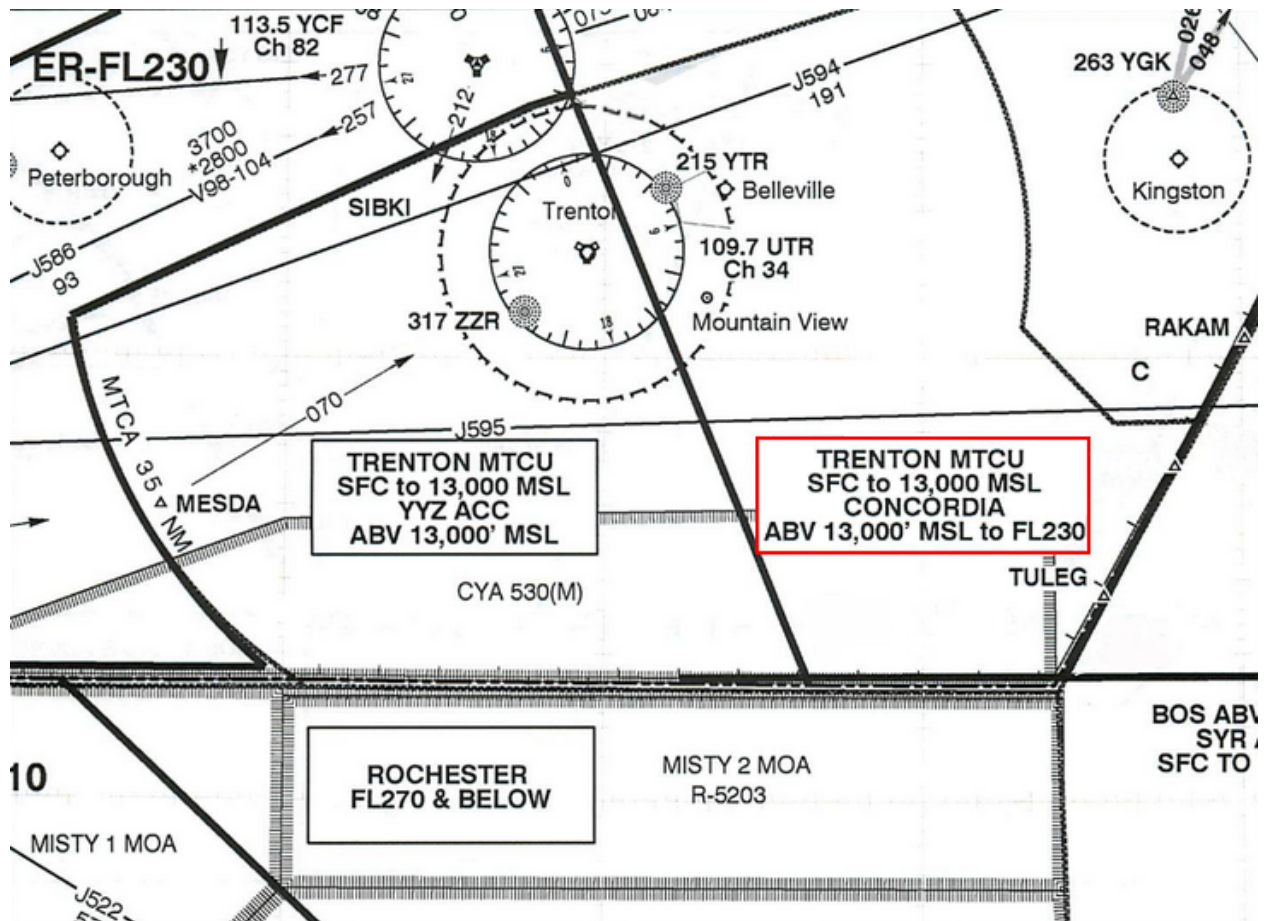
VATUSA CLEVELAND ARTCC AND VATCAN TORONTO ACC,
VATCAN MONTREAL ACC LETTER OF AGREEMENT

ATTACHMENT 4 - CONCORDIA SECTOR OPERATIONS

The Concordia sector common control boundary is defined as a boundary that stretches from the northeastern corner of the MISTY 2 MOA to a point 17NM west from the northeastern corner of the MISTY 2 MOA (43°38'00"N/76°47'29"W to 43°37'56"N/77°10' 36"W).

The delegation for the Concordia sector airspace shall be as followed:

- a. When ZUL is online: ZUL assumes control of the Concordia sector, excluding the Trenton MTCU, from 13,000ft-FL230 and therefore aircraft shall be handed off between ZOB/ZUL if bound to enter/exit the airspace.
- b. When ZUL is offline: ZYZ retains control of the airspace.



**VATUSA CLEVELAND ARTCC AND VATCAN TORONTO ACC,
VATCAN MONTREAL ACC LETTER OF AGREEMENT**

ATTACHMENT 5 - PROCEDURES & PREFERRED ROUTES AND RESTRICTION TABLES

ZOB Provides for ZYZ							
#	Arrival Airport	Qualifier	Aircraft Type	Route Required	Altitude Restriction <small>Unless otherwise specified, required altitudes is at the boundary</small>	Notes	
1	CYYZ	From FNT sector and D21	Jets	<i>APDAX NUBER STAR</i>	AOB FL210	Arrivals entering KIT or GRM sectors must be spaced a minimum of 5nm in trail between similar types, unless otherwise coordinated.	
			Non-Jets	<i>APDAX NAKBO STAR</i>			
		From DRE Sector	Jets	<i>FINGL NUBER STAR</i>	AOB FL190		
			Non-Jets	<i>FINGL NAKBO STAR</i>			
		From ECK Sector		<i>BBOXX NUBER STAR</i>	AOB FL310		Arrivals entering CEN sector must be spaced a minimum of 10NM in trail, unless otherwise coordinated.
		From HUD Sector		<i>KNOOK NUBER STAR</i>	AOB FL310		
		Over WOZEE	Jets	<i>WOZEE LINNG STAR</i>	AOB 17,000		Any Non-RNAV aircraft must be routed to intercept the YYZ 160 radial (prior to 26 DME) and track inbound to YYZ. ZOB is not required to space arrivals via OXMAN with those via WOZEE/LOKPU.
			Non-Jets	<i>WOZEE VERKO STAR</i>	AOB 14,000		
		Direct LINNG	Jets	<i>LOKPU LINNG STAR</i>	AOB 17,000		
			Non-Jets	<i>LOKPU VERKO STAR</i>	AOB 14,000		
		Over OXMAN	Jets	<i>OXMAN LINNG STAR</i>	AOB 16,000		
			Non-Jets	<i>OXMAN VERKO STAR</i>	AOB 15,000		
2	CYKZ	From ECK Sector		BBOXX direct	AOB FL310		
		From HUD Sector		KNOOK direct	AOB FL310		
		From the EAST		LINNG direct	AOB 11,000		

**VATUSA CLEVELAND ARTCC AND VATCAN TORONTO ACC,
VATCAN MONTREAL ACC LETTER OF AGREEMENT**

3	CYTZ	From FNT Sector		DERLO DUROT direct	AOB FL190	
		From the SOUTH		GGUCE UDNEM KAXOL or <i>KAXOL STAR</i>	AOB 11,000	
		From the EAST		LINNG direct		
4	CYHM	From the EAST		DKK direct or WOZEE COLTS direct or WOZEE COLTS <i>COLTS STAR</i>	AOB 11,000	
		Over ERI or from the SOUTH		Direct CYHM	AOB 11,000	
		From DRE Sector		GGUCE direct or GGUCE TIKUM <i>TIKUM STAR</i>	AOB 15,000	
		Over HOCKE	RNAV	HOCKE AVSOX <i>AVSOX STAR</i>	AOB FL290	
			If unable to fly STAR	HOCKE direct		
5	CYXU	From FNT Sector		Direct	AOB FL210 descending to 12,000	
6	KBUF or KIAG	Via WOZEE		WOZEE direct	AOB FL310	
7	KDTW Sats	From the EAST		COLTS <i>GIGGY STAR</i> or COLTS <i>OKLND STAR</i>	AOB FL360	Area 3 must not clear aircraft direct past BOREK, in which case the aircraft must be AOB FL300.
8	ALL Except CYHM and CYYZ	DTW Terminal Departures	Jets	ZETTR SID	AOB FL290	
			Non-Jets		AOB FL230	

**VATUSA CLEVELAND ARTCC AND VATCAN TORONTO ACC,
VATCAN MONTREAL ACC LETTER OF AGREEMENT**

ZYZ Provides for ZOB						
#	Arrival Point	Qualifier	Aircraft Type	Route Required	Altitude Restriction <small>Unless otherwise specified, required altitudes is at the boundary</small>	Notes
1	ALL	Toronto Area departures via BUF Sector	Jets	<i>KEPTA SID</i>	Climbing to FL230 or requested altitude, whichever is lower	
			Non-Jets	<i>MAVAN SID</i>	Climbing to FL230 or requested altitude, whichever is lower	Filed less than 320 kts.
				<i>TEVAD SID</i>	Climbing to FL230 or requested altitude, whichever is lower	Filed 320 kts. or greater
		Toronto Area departures via DKK Sector	Jets	<i>RIGUS SID</i>	Climbing to FL230 or requested altitude, whichever is lower	
				<i>BETES SID</i>		
			Non-Jets	<i>DUSOM SID</i>	Climbing to FL230 or requested altitude, whichever is lower	
				<i>OAKVL SID</i>		
		Toronto Area departures via GGUCE	Jets	<i>ANCOL SID</i>	Climbing to FL220 or requested altitude, whichever is lower	YQO transition is restricted to aircraft flight planned AOB FL240.
			Non-Jets	<i>PERLO SID</i>		
		Toronto Area departures via GENTRY transition.	Jets	<i>MIXUT SID</i>	Climbing to requested altitude, unless otherwise coordinated	Aircraft requesting AOA FL260
			Non-Jets	<i>PEMBA SID</i>		
		Toronto Area departures via FNT Sector	Jets	<i>GOPUP SID</i>	Flight planned altitude	
			Non-Jets	<i>TULEK SID</i>		
		2	KCLE	Via DSV or DKK sectors		<i>LFTON TRYBE STAR</i>
Via HUD or DRE sectors				<i>DOZZR BRWNZ STAR</i>	AOB FL240	
3	KDTW	Via GGUCE	Jets	<i>GGUCE TPGUN STAR</i>	AOB FL260	
			Non-Jets	<i>GGUCE CUUGR STAR</i>	AOB FL220	
4	KDTW	Via AXXIS		<i>AXXIS GIGGY STAR</i>	AOB 10,000	Via MTC approach

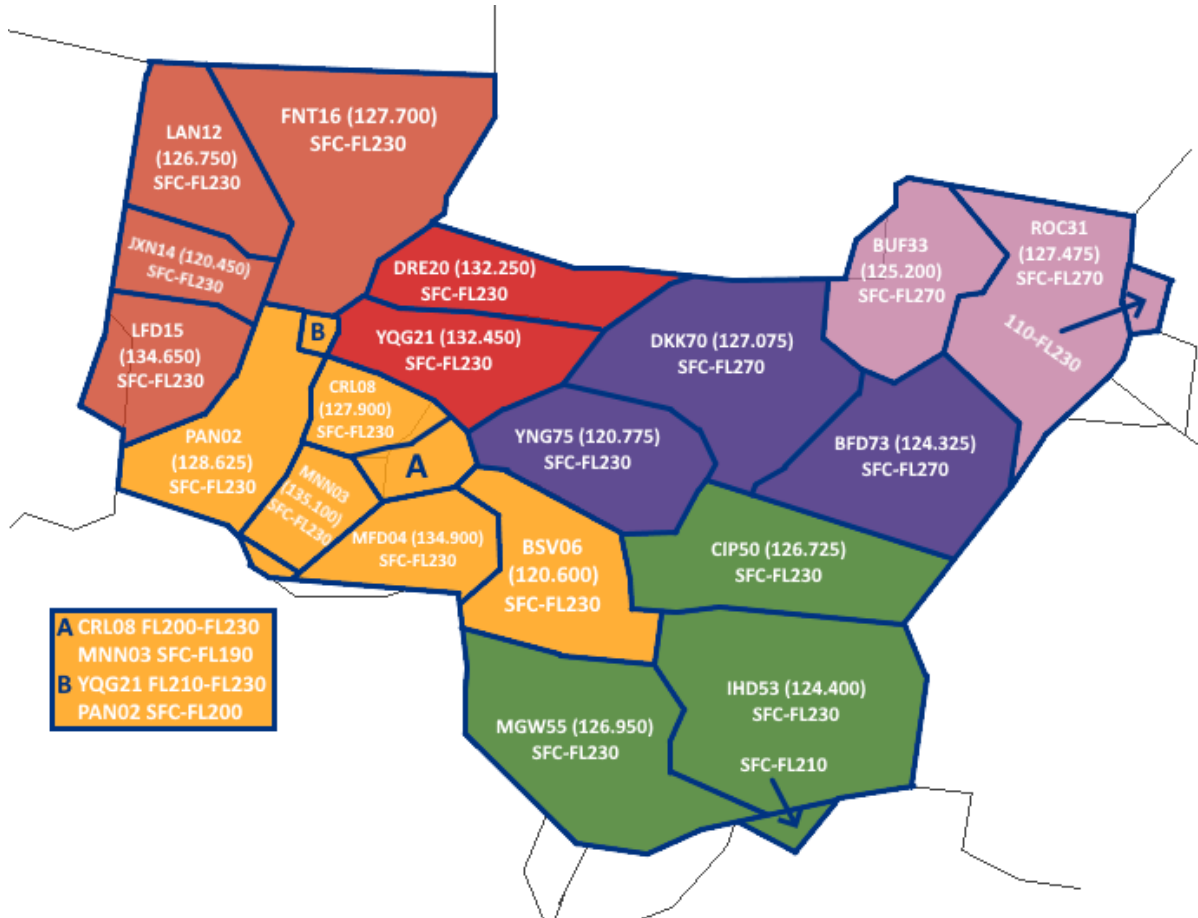
**VATUSA CLEVELAND ARTCC AND VATCAN TORONTO ACC,
VATCAN MONTREAL ACC LETTER OF AGREEMENT**

	Sats			<i>AXXIS OKLND STAR</i>	AOB 12,000	
5	KEWR KTEB KMMU KSWF	Via common boundary EAST of GGUCE			AOB FL330	
6	KFNT				AOB FL230	
7	KMBS				AOB FL240	
8	KBUF			BUF	AOB 6,000	
9	KIAG				AOB 3,000	
10	KMTC			MTC	AOB 8,000	
11	KROC	Via common boundary along BUF TRACON			AOB 15,000	
12		Via Trenton MTCU / MISTY 2 MOA			AOB 8,000	
13	KSYR				AOB FL270	
14	ALL	CYXU Westbound Departures			AOB FL280	

VATUSA CLEVELAND ARTCC AND VATCAN TORONTO ACC,
VATCAN MONTREAL ACC LETTER OF AGREEMENT

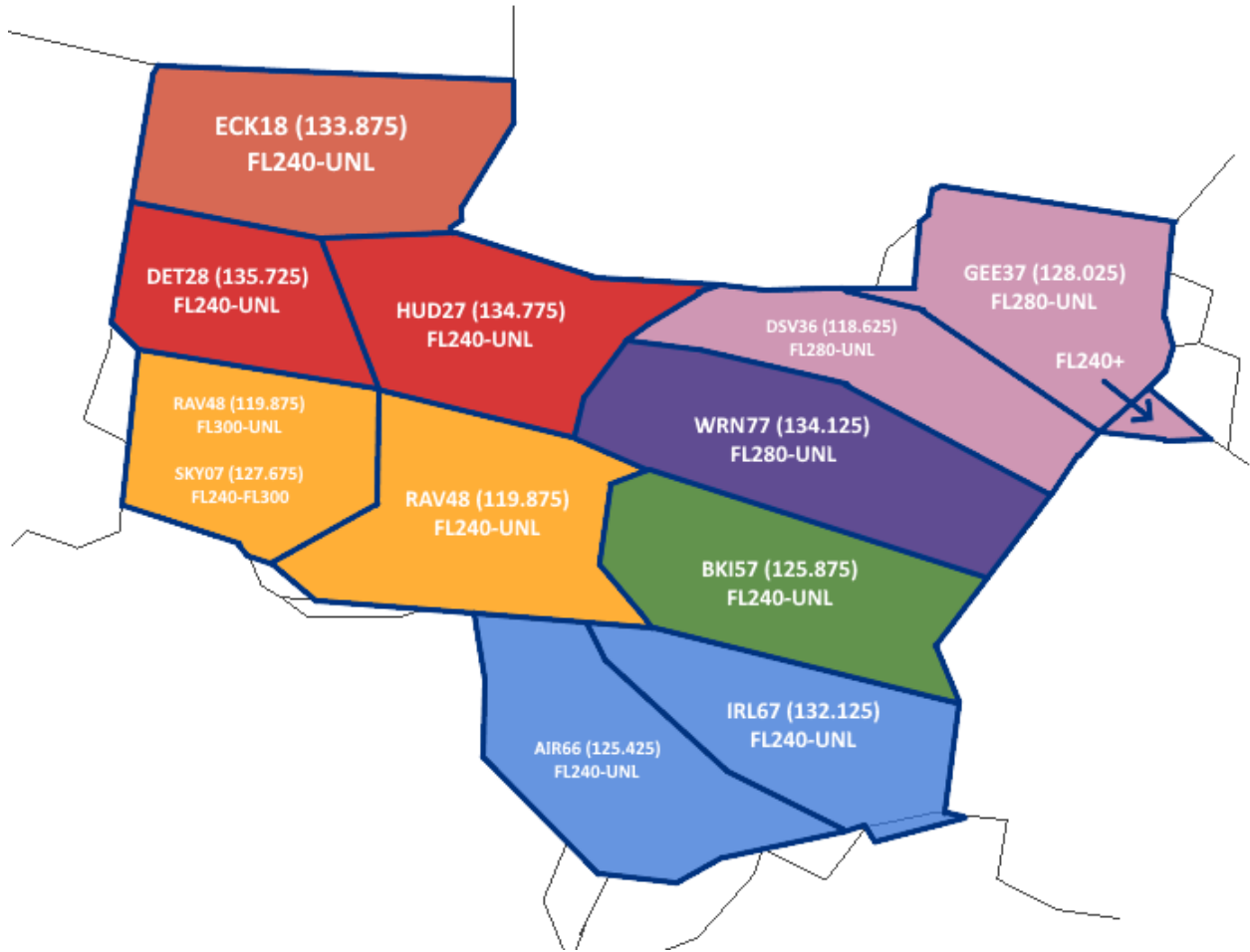
ATTACHMENT 6 - AIRSPACE MAPS

6-1 ZOB Low Sector



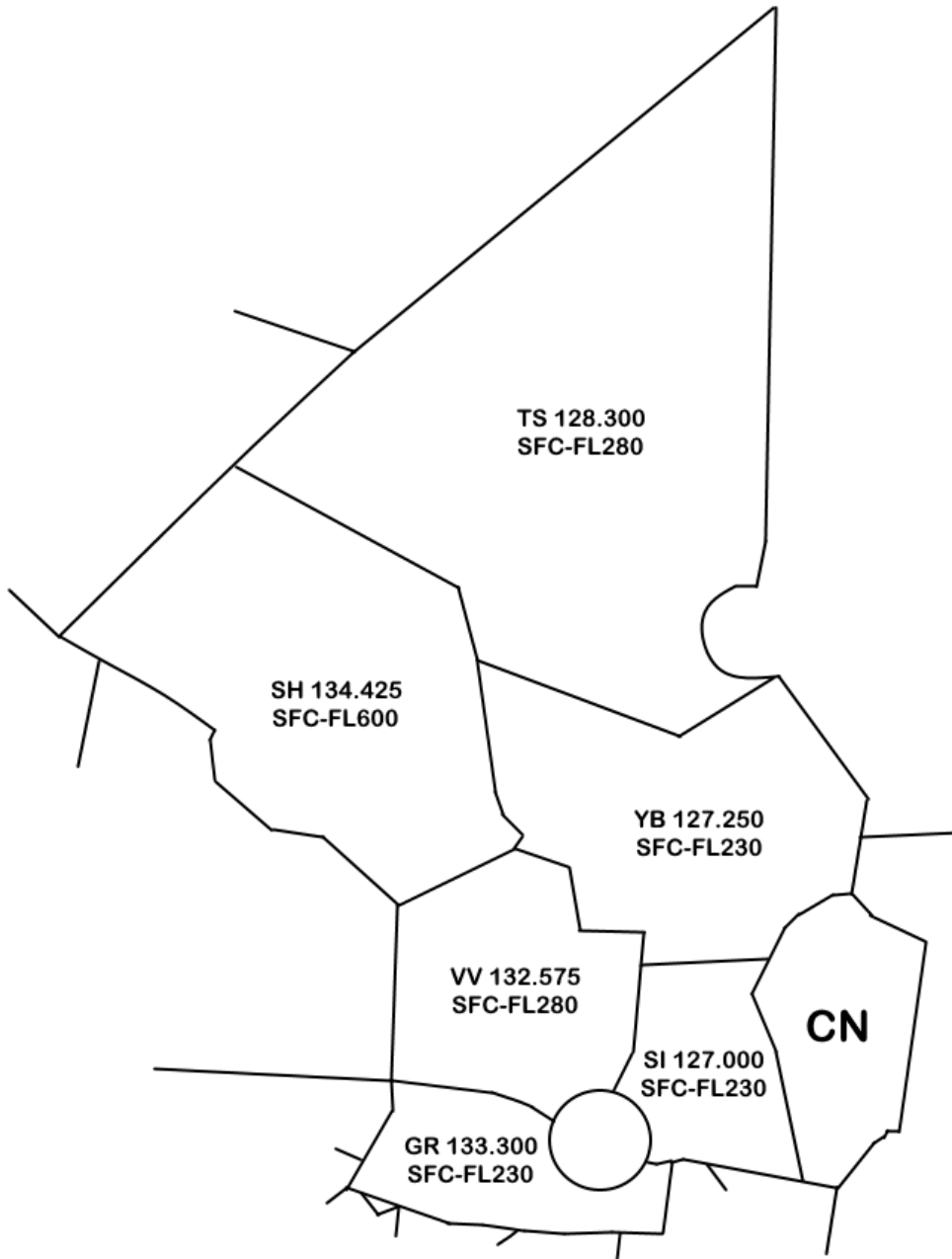
VATUSA CLEVELAND ARTCC AND VATCAN TORONTO ACC,
VATCAN MONTREAL ACC LETTER OF AGREEMENT

6-2 ZOB High Sector



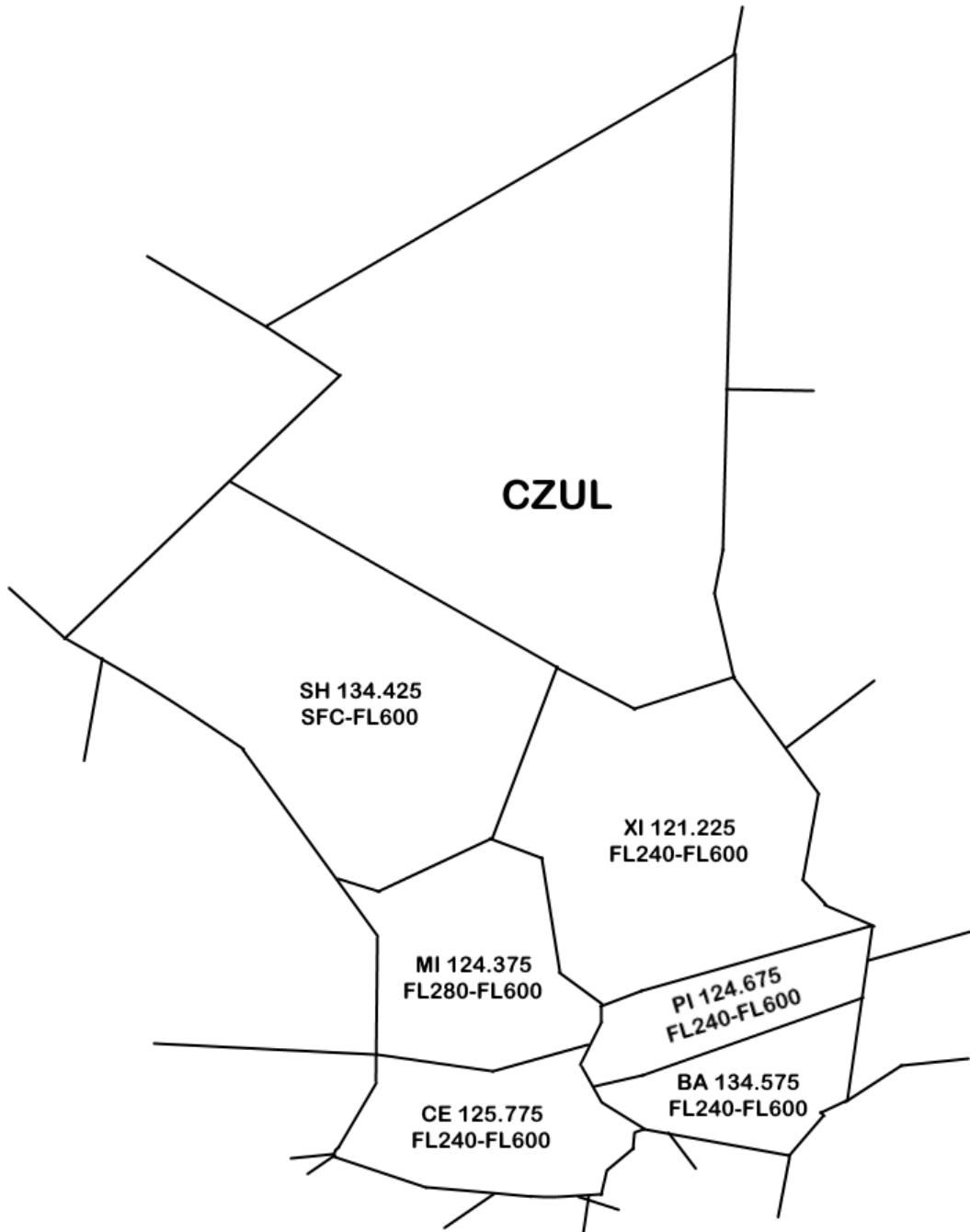
VATUSA CLEVELAND ARTCC AND VATCAN TORONTO ACC,
VATCAN MONTREAL ACC LETTER OF AGREEMENT

6-3 ZYZ Low Sector



VATUSA CLEVELAND ARTCC AND VATCAN TORONTO ACC,
VATCAN MONTREAL ACC LETTER OF AGREEMENT

6-4 ZYZ High Sector



VATUSA CLEVELAND ARTCC AND VATCAN TORONTO ACC,
VATCAN MONTREAL ACC LETTER OF AGREEMENT

6-5 ZYZ Airport Specialty Sectors (TOR_APP)

